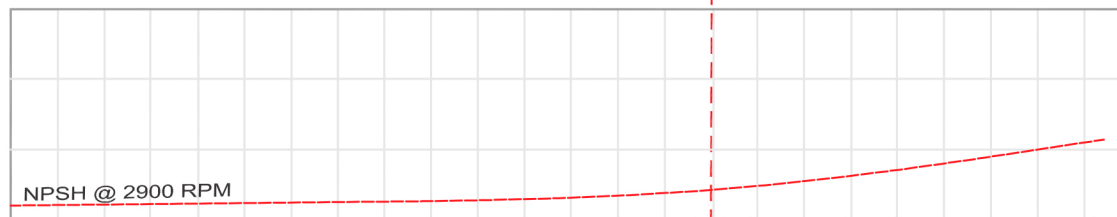
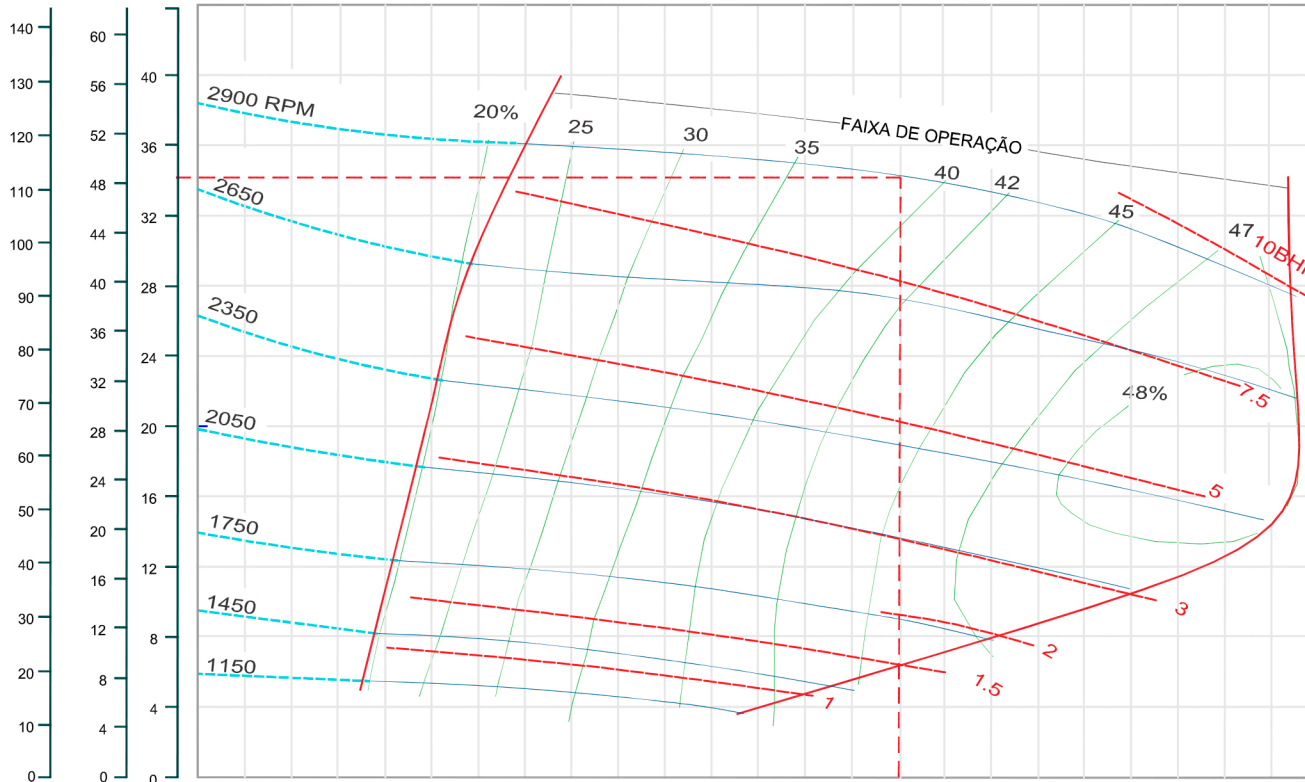


CURVA DE PERFORMANCE S-2



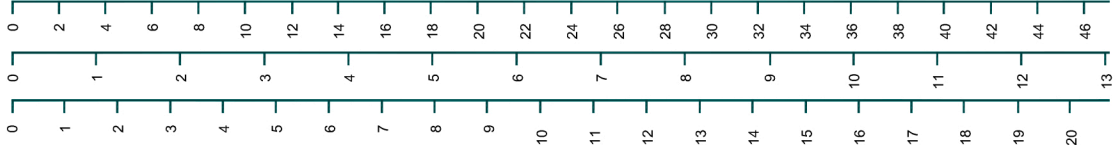
ALTURA MANOMÉTRICA TOTAL
FT PSI mca



VAZÃO: m³/h

L/s

GPM



NPSH REQUERIDO POTÊNCIA/ALTURA MANOMÉTRICA/RENDIMENTOS

DADOS

Dia. Rotor	158,75mm (6.1/4")
R.P.M.	Conf. Indicado
ØMax.Sólidos	44,45mm (1.3/4")

RE-AUTO ESCORVA

1150 rpm 7,3m - 1450 rpm 7,6m
 1750 rpm 7,6m - 2050 rpm 7,6m
 2350 rpm 7,6m - 2650 rpm 7,6m
 2650 rpm 7,6m - 2900 rpm 7,6m

Antes de usar esta tabela,
 verifique o NPSH da aplicação